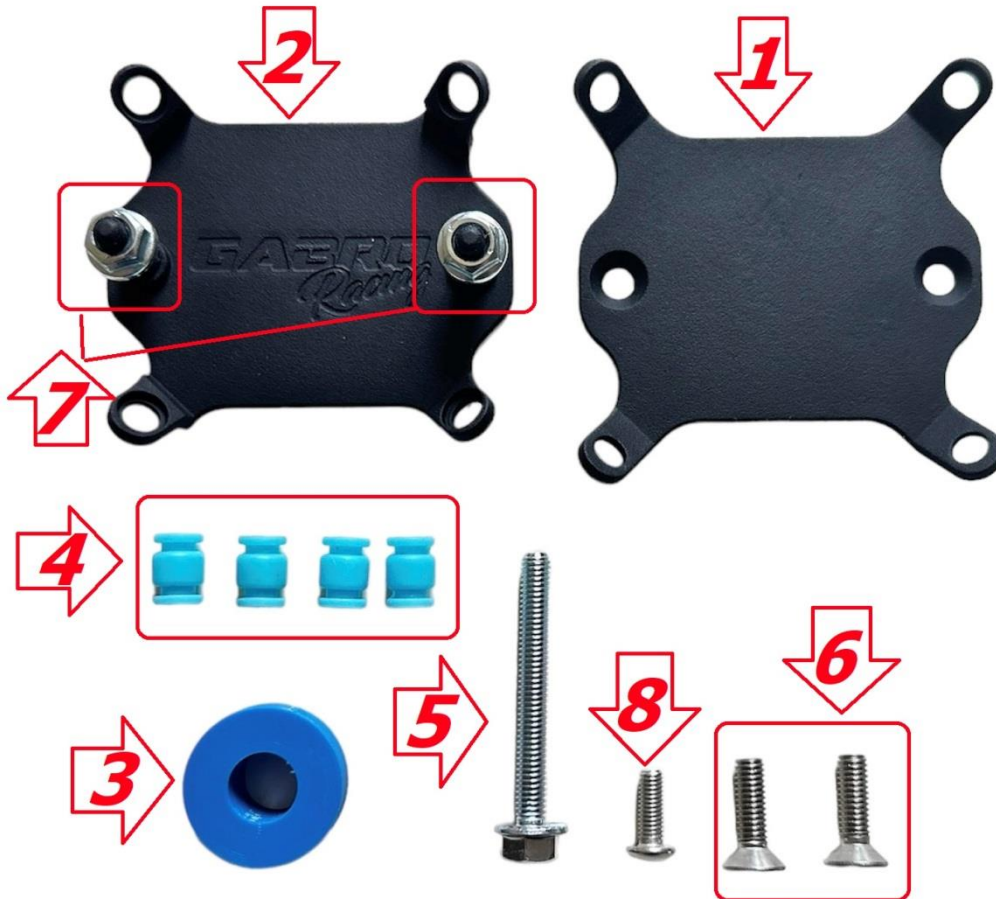


Thanks for purchasing our RS / Tuono 660 IMU damper support Kit



**PARTS LIST:**

- #1 1x lower strut
- #2 1x upper strut
- #3 1x fuel tank support spacer
- #4 4x dampening supports
- #5 1x M6 screw for tank support
- #6 2x M6 screw
- #7 2x M6 nuts
- #8 1x M5 screw

The IMU (gyroscopic sensor) fitted in Aprilia RS & Tuono660 is very sensitive to vibrations, and can trigger an alarm when ridden hard, especially on track. Dash red alert says "Alarm Service ATC disabled" bike's ECU diag record it as "P1911 sensor box failure". Other than vibration, the error can be triggered by a curb hit. This IMU dampening system has been developed by Gabro Racing in latest 2 years racing activity with those bikes and greatly reduce faults occurrence.

## INSTALLATION

A- Remove the passenger and rider seats, left and right underseat panels, front tank cover, undo front and rear tank supports, lift and remove the tank, disconnecting the fuel vent hoses, the fuel pump electrical connector and the fuel hose at the fuel pump connection (slide the yellow guard, press both buttons to release it, place a rag underneath for collect the fuel spill).

B- Remove the IMU from its fixing points in the seat undertray. Discard oem bolts and washer.

**NOTE:** Aprilia is now using red Loctite on those screws: to make red locktite softner, you have to undo the screw a bit, then pour WD40 in the threads an let it cure trying to unscrew/screw the bolt from time to time. Do not force them without following this procedure, they will probably seize.

C- Preinstall the 4x dampening supports (item #4) in the lower strut (item #1) and install it in the seat undertray IMU fixing points, using the item #6 M6 screws (**FIG 1**).

D- Install the upper strut (item #2) on the dampening supports, making sure they all all correctly inserted in both upper and lower struts lugs.

E- Place the IMU on the support, with the electrical connector facing forward, and secure it to the upper strut using the 2x M6 nuts (item #7) (**FIG 2**).

F- Remove one fuel pump flange screw and replace it with the supplied M5 screw (item #5) (**FIG 3**).

G- Replace the rear tank support lower rubber spacer with the supplied item #3 and the rear tank support screw with supplied item #5 (**FIG 4**).

H- Fit back the fuel tank and the rest of the bike parts reversing the order followed in step A.

**NOTE:** the supplied screw item #5 is made for the stock bike setup: you may need a different screw depending on the race tail unit you use.

***ATTENTION: it's a race product to be used in closed circuits only***



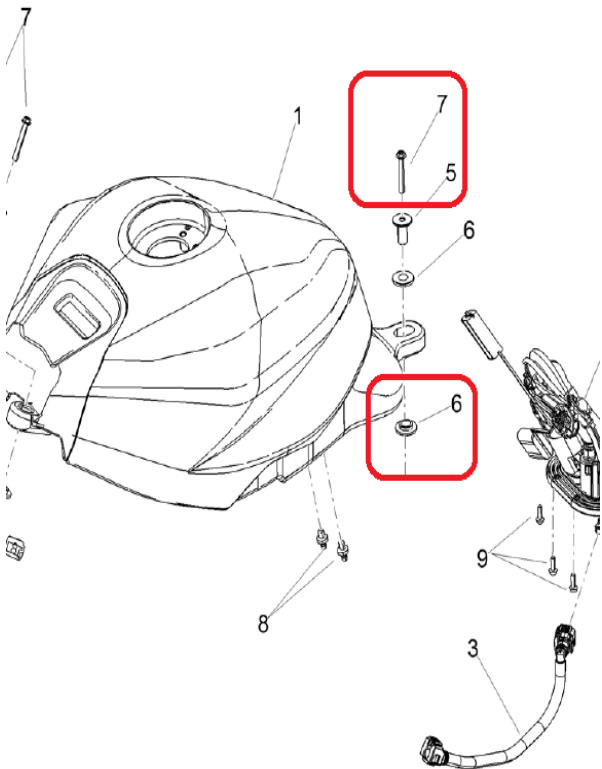
**FIG 1**



**FIG 2**



**FIG3**



**FIG 4**

